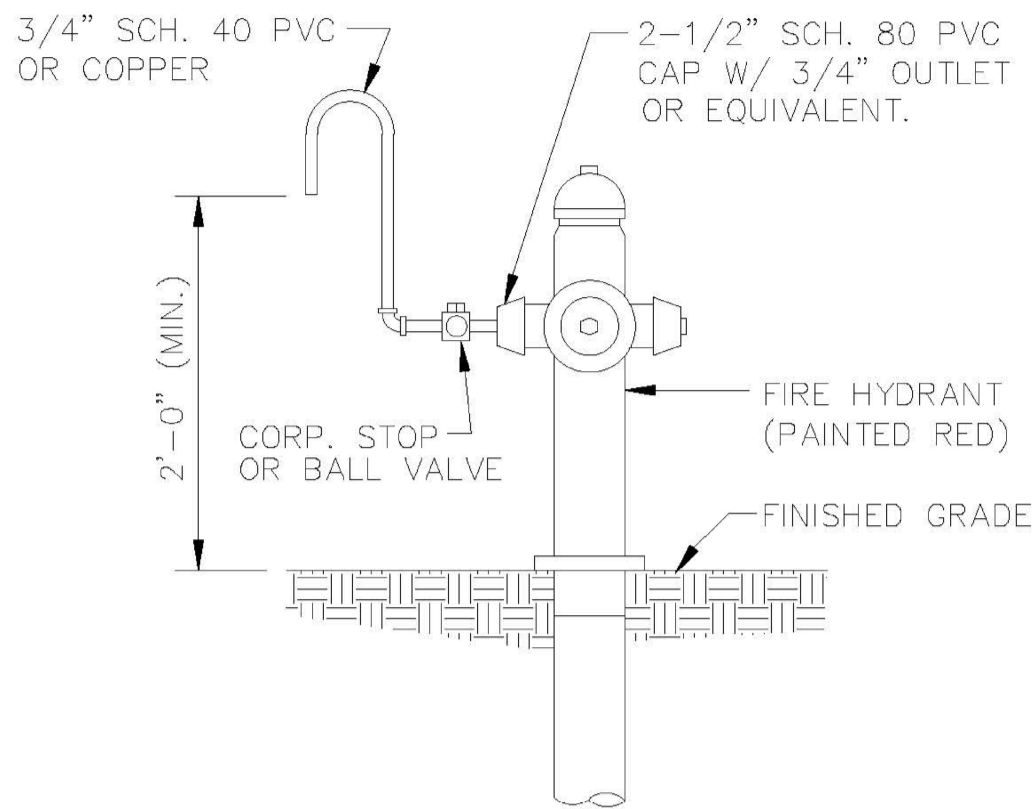


SAMPLE POINT ( MAIN )

ALL D.I.P. TO BE PAINTED  
BLUE ON TOP HALF OF PIPE.

ENGINEERING STANDARDS 2022			
REVISIONS		ENGINEERING DIVISION CITY OF POMPAÑO BEACH	SAMPLE POINT (MAIN)
BY	DATE		
S.S.	04-2005		
		SCALE: N.T.S.	DATE: MAY 2022 DWG. NO. 100-1

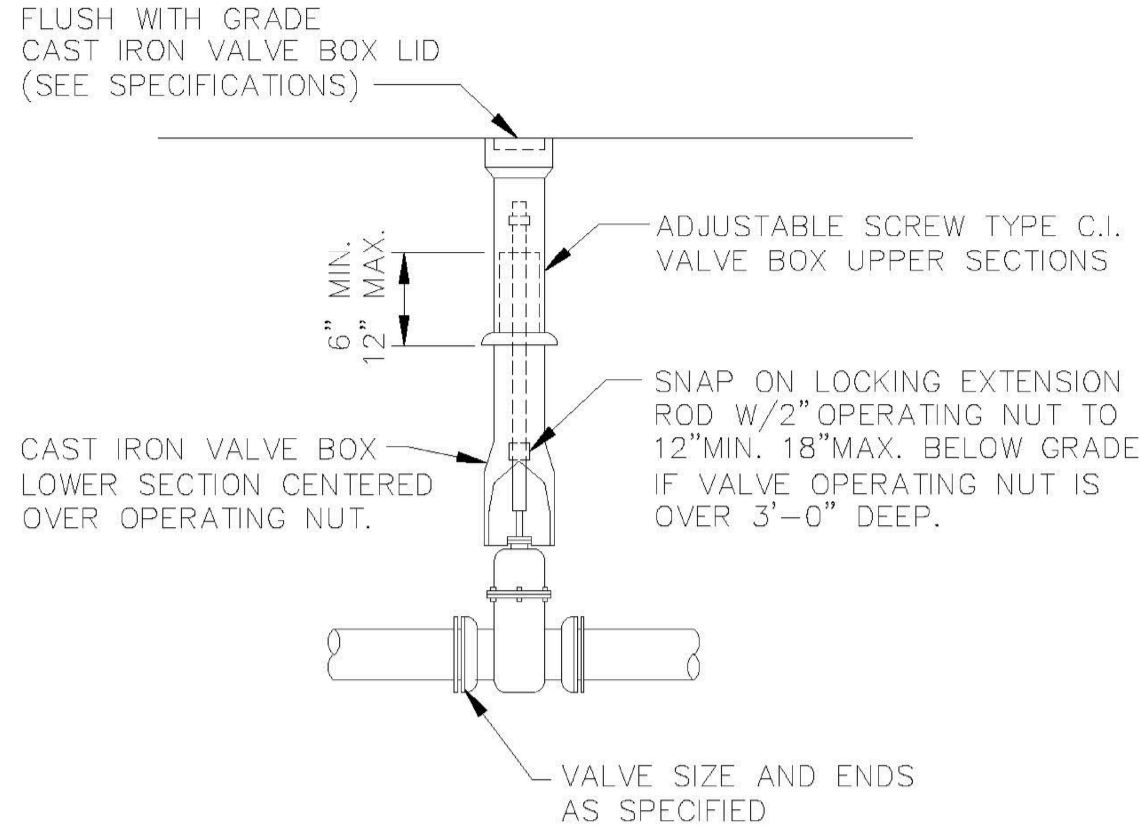


SAMPLE POINT ( HYDRANT )

ALL POMPAÑO BEACH HYDRANTS SHALL BE PAINTED RED.

ALL D.I.P. TO BE PAINTED  
BLUE ON TOP HALF OF PIPE.

ENGINEERING STANDARDS 2022			
REVISIONS		ENGINEERING DIVISION CITY OF POMPAÑO BEACH	SAMPLE POINT (HYDRANT)
BY	DATE		
S.S.	04-2005		
		SCALE: N.T.S.	DATE: MAY 2022 DWG. NO. 101-1

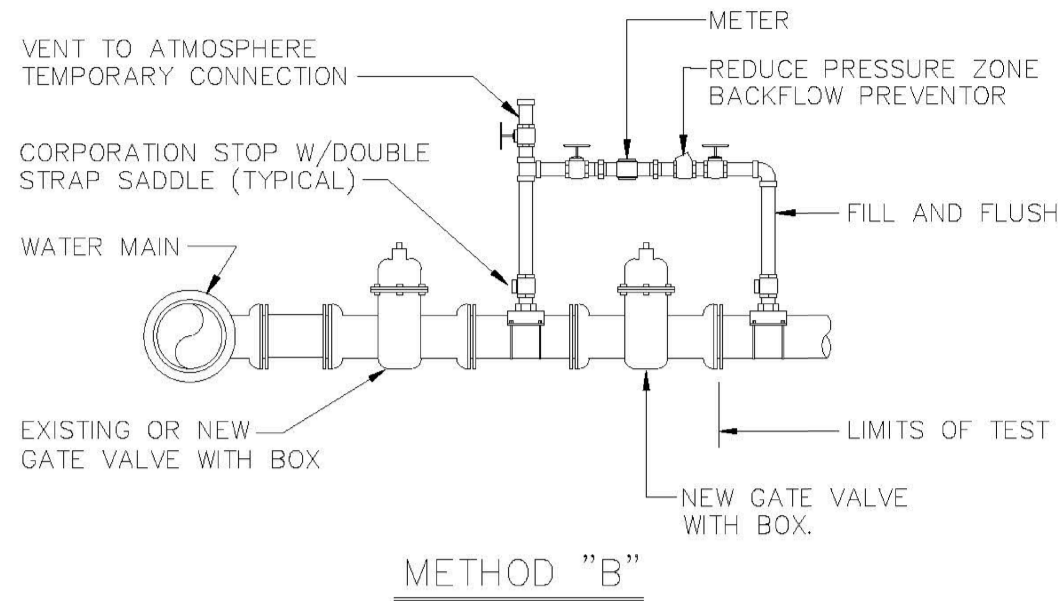


GATE OR PLUG VALVE SETTING

USE MEGALUGS AT ALL PIPE JOINTS

ALL D.I.P. TO BE PAINTED  
BLUE ON TOP HALF OF PIPE.

ENGINEERING STANDARDS 2022			
REVISIONS		ENGINEERING DIVISION CITY OF POMPAÑO BEACH	GATE OR PLUG VALVE SETTINGS
BY	DATE		
S.S.	04-2005		
T.W.	11-2007		
		SCALE: N.T.S.	DATE: MAY 2022 DWG. NO. 103-1



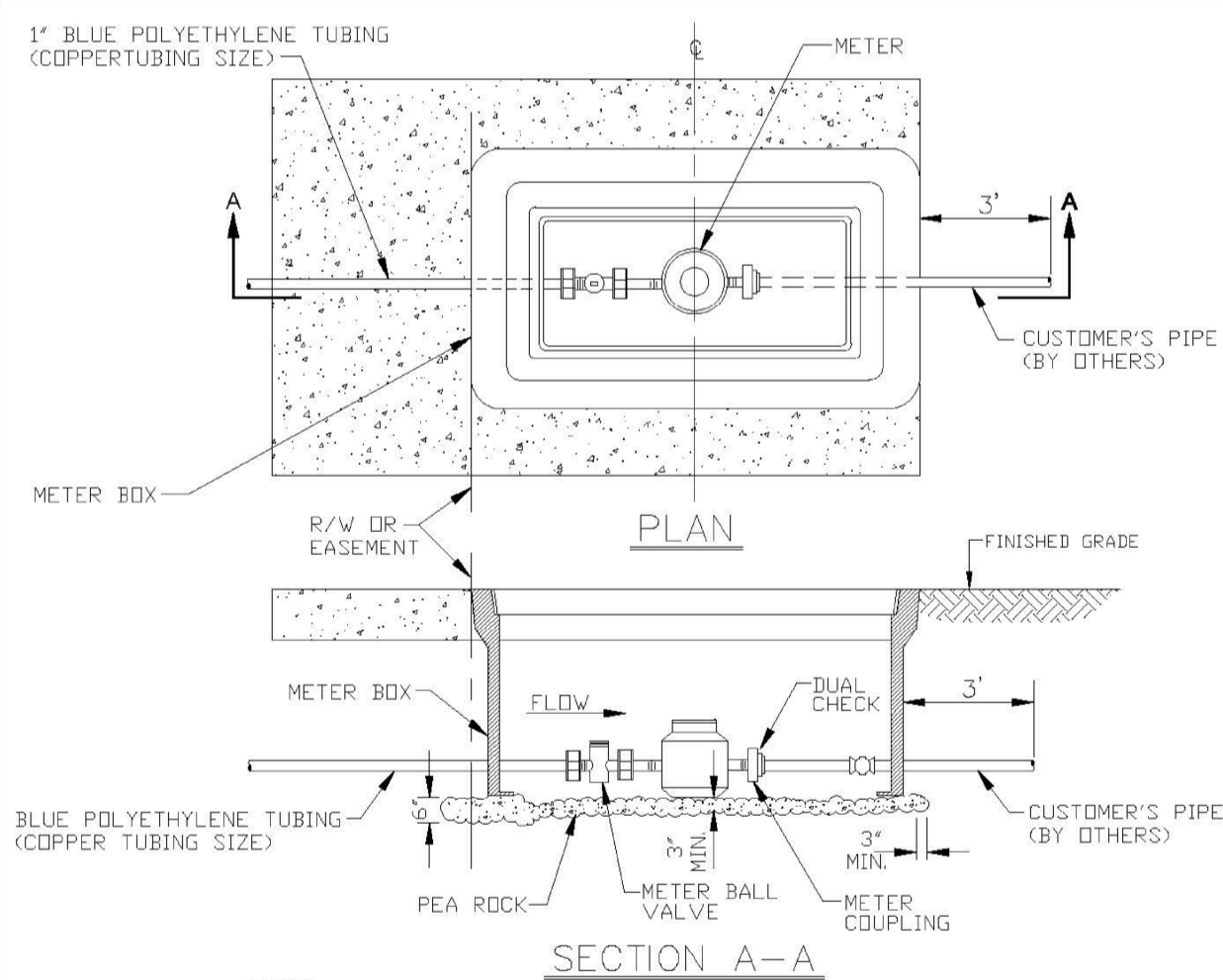
NOTES:

1. WATER MAIN TO BE PRESSURE TESTED AND DISINFECTED ACCORDING TO BROWARD COUNTY PUBLIC HEALTH UNIT REGULATIONS, AWWA, AND MUNICIPAL SPECIFICATIONS IN EFFECT.
2. BACTERIOLOGICAL TESTS ARE TO BE PERFORMED BY THE CONTRACTOR AND AN APPROVED TESTING LABORATORY.
3. REMOVE TEMPORARY CONNECTION AT SADDLE ON NEW MAINS AFTER FILLING AND FLUSHING HAS BEEN COMPLETED AND REPLACE WITH BRASS PLUG
4. PROVIDE ALL NECESSARY THRUST BLOCKS OR OTHER RESTRAINTS.
5. FILLING AND FLUSHING LOCATIONS SHALL BE COORDINATED BY THE CONTRACTOR, ENGINEER, AND CITY.
6. VENT TO ATMOSPHERE SHALL REMAIN OPEN DURING ALL PHASES OF PRESSURE TESTING
7. AFTER COMPLETION FILL AND FLUSH CONNECTION
8. USE MEGALUGS AT ALL PIPE JOINTS

FILLING AND FLUSHING CONNECTION

ALL D.I.P. TO BE PAINTED  
BLUE ON TOP HALF OF PIPE.

ENGINEERING STANDARDS 2022			
REVISIONS		ENGINEERING DIVISION CITY OF POMPAÑO BEACH	FILLING / FLUSHING CONNECTION
BY	DATE		
S.S.	04-2005		
T.W.	11-2007		
S.S.	01-2012		
		SCALE: N.T.S.	DATE: MAY 2022 DWG. NO. 104-1



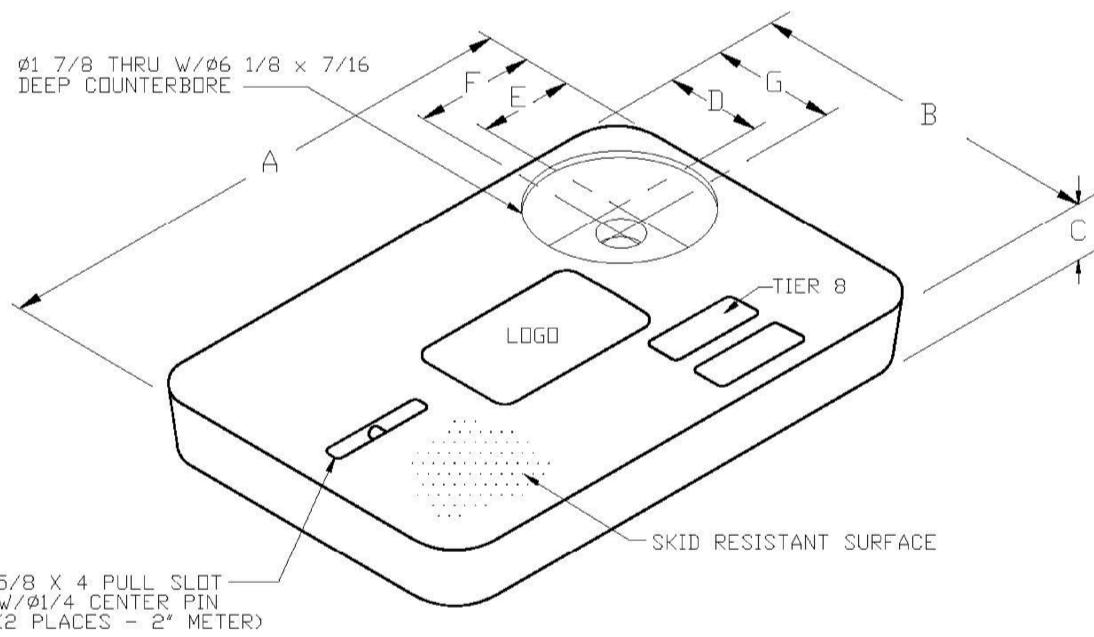
NOTES:

1. ALL METERS WILL BE SUPPLIED AND INSTALLED BY CPB UTILITIES. METER HAS IRON PIPE THREAD MALE CONNECTION ON EACH END.
2. METER SHALL BE CENTERED IN BOX.
3. DUAL CHECK IS SAME SIZE AS CUSTOMER'S SERVICE LINE.

METER SIZE	LAYING LENGTH (IN)	HEIGHT (IN)
3/4"	7.5	4.56
1"	10.75	5.75

METER BOX INSTALLATION

ENGINEERING STANDARDS 2022			
REVISIONS		ENGINEERING DIVISION CITY OF POMPAÑO BEACH	METER BOX INSTALLATION FOR 5/8" AND 1" METERS
BY	DATE		
S.S.	11-2012		
		SCALE: N.T.S.	DATE: JAN. 2022 DWG. NO. 105-2



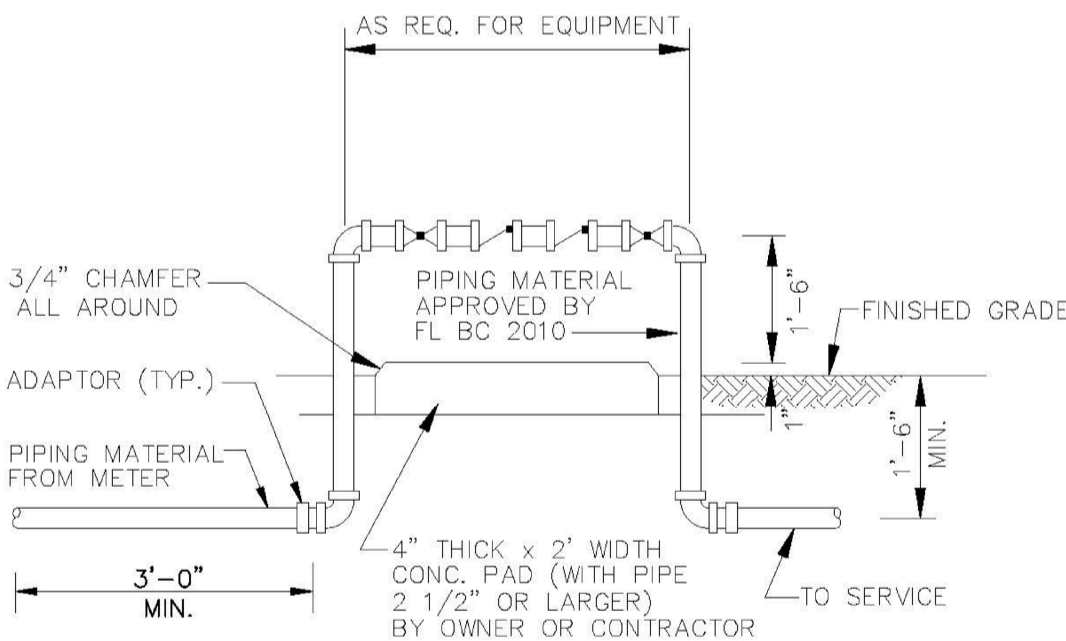
METER BOX COVER DIMENSIONS (IN)							
METER SIZE	A	B	C	D	E	F	G
1"	18 1/8"	11 1/4"	1 3/4"	3 3/4"	4"	4 9/16"	4 5/16"
1 1/2"	23 1/4"	13 3/4"	2"	4"	4"	4 9/16"	4 9/16"
2"	30 1/2"	17 1/2"	2"	4"	4"	4 9/16"	4 9/16"

NOTES

1. CUSTOMER IS CITY OF POMPAÑO BEACH FLORIDA. LOGO TO BE SPECIFIED. CITY OF POMPAÑO BEACH POTABLE WATER.
2. FITS NEPTUNE R450 ANTENNA.
3. THIS COVER IS RATED FOR A STATIC DESIGN LOAD OF 8,000 LBS. (35,548 N) OVER A 10 (254) X 10 (254) AREA AND MUST PASS A MINIMUM STATIC TEST LOAD OF 12,000 LBS (53,376 N).
4. METER BOX COVER SHOULD BE RATED FOR TRAFFIC CONDITION AS DETERMINED BY ENGINEER OF RECORD.

POTABLE WATER METER BOX COVER

ENGINEERING STANDARDS 2022			
REVISIONS		ENGINEERING DIVISION CITY OF POMPAÑO BEACH	TYPICAL METER BOX COVER
BY	DATE		
S.S.	11-2012		
		SCALE: N.T.S.	DATE: JAN. 2022 DWG. NO. 105-3



BACKFLOW PREVENTER

1. USE MEGALUGS AT ALL PIPE JOINTS 3" AND LARGER.
- PLEASE SEE METER INSTALL DIMENSION LIST ON STANDARD NO. 106-4.
- SMALL UNITS UNI-STRUT SUPPORT.

ENGINEERING STANDARDS 2022			
REVISIONS		ENGINEERING DIVISION CITY OF POMPAÑO BEACH	BACKFLOW PREVENTER
BY	DATE		
S.S.	04-2008		
S.S.	03-2009		
S.S.	11-2012		
S.S.	01-2013		
		SCALE: N.T.S.	DATE: MAY 2022 DWG. NO. 106-1



Digitally signed by Bealinda M Pell  
DN: c=US, o=Unaffiliated,  
dnQualifier=A01410C0000018E2E  
86C2580002F48A, cn=Bealinda M  
Pell  
Date: 2024.08.20 16:04:12 -04'00'



DESIGNED: WFI	DATE: 01/2023
DRAWN: WFI	DATE: 01/2023
CHECKED: WFI	DATE: 01/2023
PUBLISHED: 11/8/2023, 4:36:10 PM	



PALM AIRE TENNIS CENTER  
RWB / LINARES ARCHITECTURE

CITY OF POMPAÑO BEACH  
STANDARD WATER DETAILS

APPROVED: EB-0002995 LB-0002995	DATE:
PROJECT NUMBER 22036	SHEET WD1 OF 4